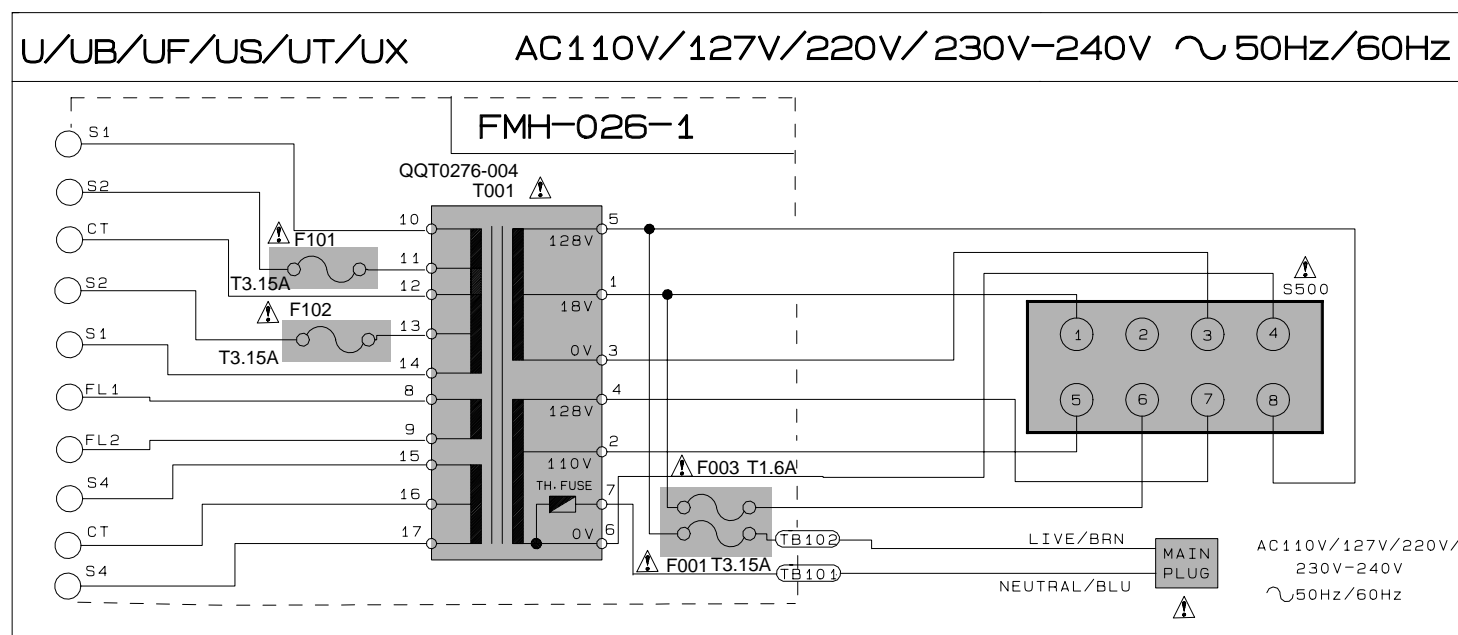
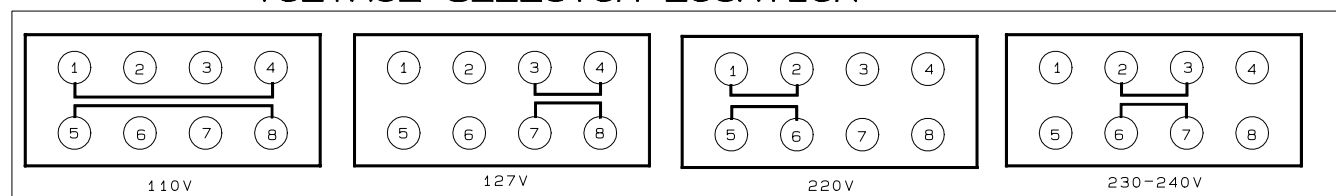


Standard schematic diagrams

■ Power transformer section



VOLTAGE SELECTOR LOCATION



VERSION CODES

UB : HONG KONG
 UT : TAIWAN
 UX : SAUDI ARABIA
 US : SINGAPORE AND UNIVERSAL
 EXCEPT ALL OF ABOVE'S

EXPLANATION OF OVERALL SCHEMATIC

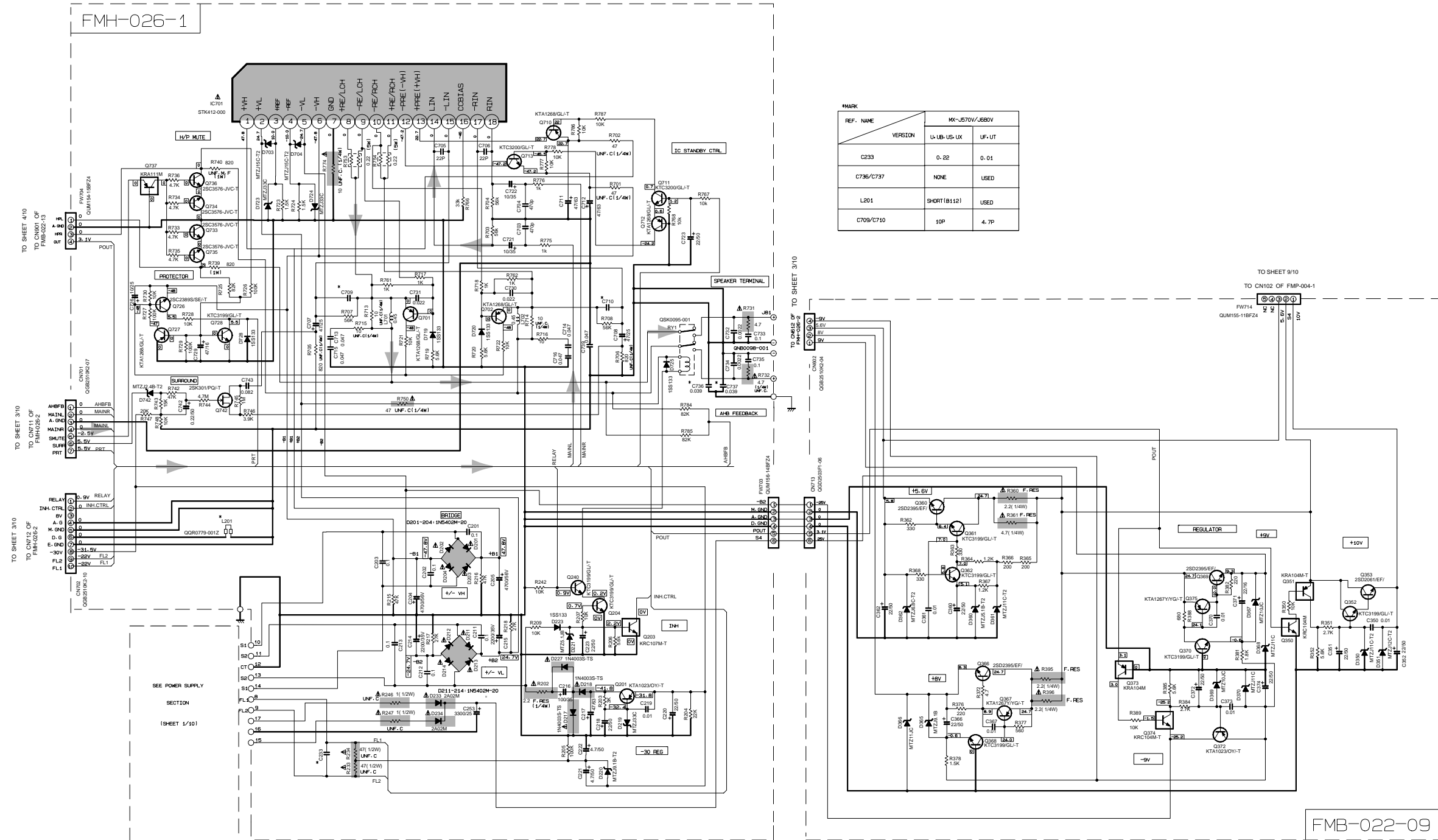
MODEL MX-J570V/MX-J680V

SHEET NUMBER	CIRCUITS DESCRIPTION
1/10	. PRIMARY WITH MAINS TRANSFORMER
2/10	. DC REGULATORS/AUDIO OUTPUT
3/10	. EXTERNAL INPUT, SOURCE SELECTOR SWITCH
4/10	. FL DISPLAY, SYSTEM CONTROL LSI, USER CONTROL KEYS
5/10	. MIC AMP, ECHO CIRCUIT
6/10	. SVCD SERVO AND SVCD SYSTEM CONTROL . SVCD CHANGER MECHANISM CONTROL
7/10	. TAPE DECK MECHANISM CONTROL . TAPE CIRCUITS SUCH AS PRE-AMP AND BIAS
8/10	. TUNER RF/IF/FM MULTIPLEX
9/10	. SVCD REGULATORS
10/10	. SUPER VCD CONTROL CIRCUIT

NOTE: MARK (*) IS TO SHOW DEVIATION IN VERSIONS
 DETAILS ARE EXPLAINED BY MARK.

▲ Parts are safety assurance parts.
 When replacing those parts make sure to use the specified.

Power amplifier & regulator section

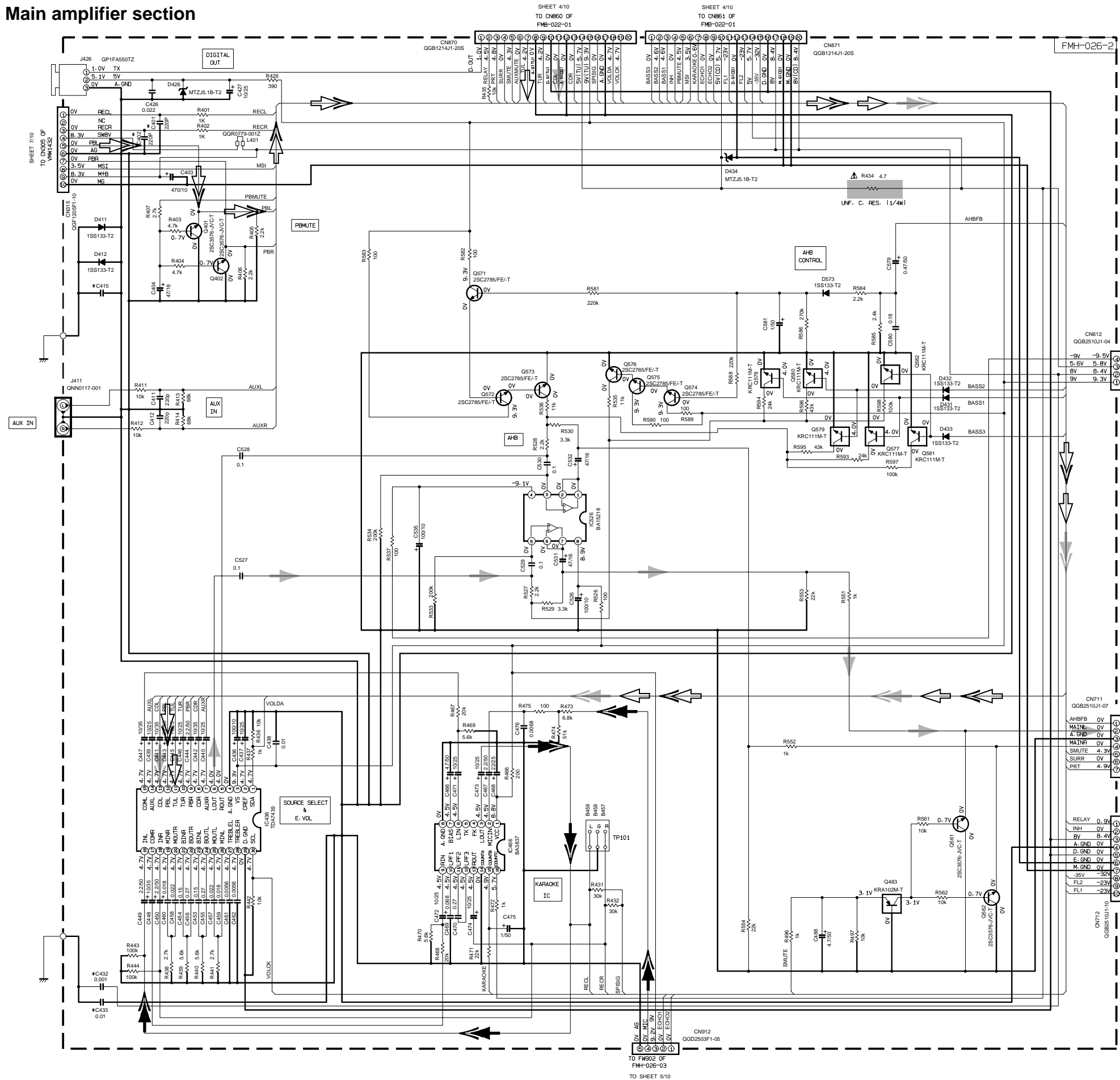


- NOTES
1. VOLTAGES ARE DC-MEASURED WITH A DIGITAL VOLT METER OR OSCILLOSCOPE WITHOUT INPUT SIGNAL. CONDITION — AUX MODE- VOL. MIN. BASS OFF
 2. UNLESS OTHERWISE SPECIFIED:
 - RESISTORS ARE 1/4W 1% CARBON RESISTOR.
 - ALL RESISTANCE VALUES ARE IN OHM (Ω).
 - ALL CAPACITORS ARE CERAMIC CAPACITOR OR MELF CAPACITOR.
 - ALL CAPACITANCE VALUES ARE IN PICO(FP).
 - ALL INDUCTANCE VALUES ARE IN MICRO(MH).
 - ALL CAPACITORS ARE SHOWN IN THE FORM OF CAPACITANCE (PF)/RATED VOLTAGE (V).
 - ALL DIODES ARE 1SS133

Parts are safety assurance parts. When replacing those parts make sure to use the specified.

MAIN signal

Function & Main amplifier section



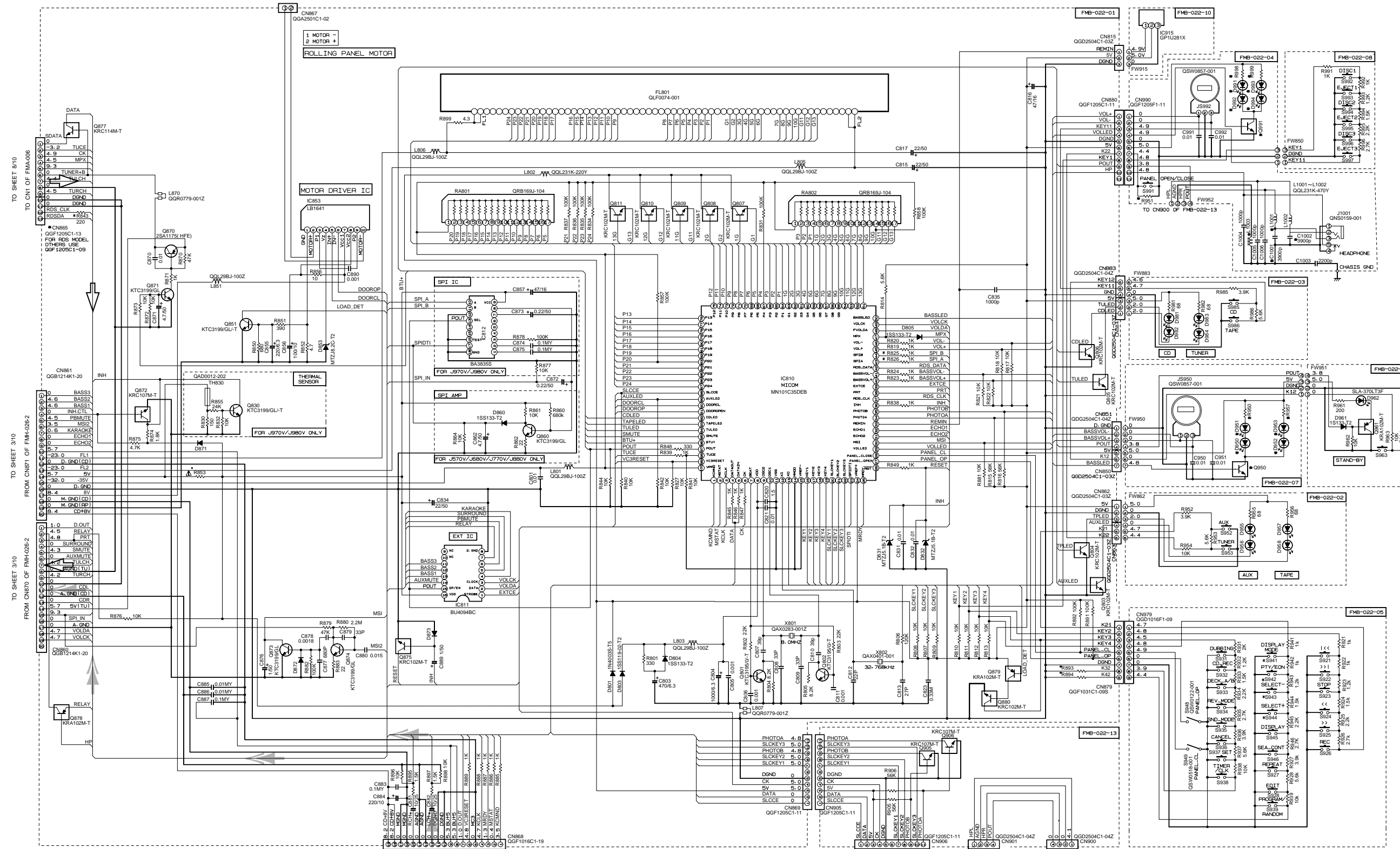
MARK	MX-J570V		MX-J680V	
	US-UK	UT	US	UF-UT
C401	NONE	USED	NONE	USED
C402	NONE	USED	NONE	USED
C415	1000p	0.0022	1000p	0.0022
C431	NONE	USED	NONE	USED
C432	NONE	USED	NONE	USED
C433	NONE	USED	NONE	USED
L401	NONE	USED	NONE	USED

NOTES
 1. VOLTAGES ARE DC-MEASURED WITH A DIGITAL VOLT METER OR OSCILLOSCOPE WITHOUT INPUT SIGNAL.
 CONDITION — AUX MODE, VOL MIN, BASS OFF
 2. UNLESS OTHERWISE SPECIFIED
 RESISTORS ARE 1/4W 1% CARBON RESISTOR.
 ALL RESISTANCE VALUES ARE IN OHMS (Ω).
 ALL CAPACITORS ARE CERAMIC CAPACITOR OR MYLAR CAPACITOR.
 ALL CAPACITANCE VALUES ARE IN PICO (pF).
 ALL INDUCTANCE VALUES ARE IN HENRY (H).
 ALL E-CAPACITORS ARE SHOWN IN THE FORM OF CAPACITANCE (μF)/RATED VOLTAGE (V).
 ALL DIODES ARE 1SS133

⚠ Parts are safety assurance parts.
 When replacing those parts make sure to use the specified.

- ➡ CD signal
- ➡ TAPE P.B. signal
- ➡ TUNER signal
- ➡ MAIN signal
- ➡ MIC signal

FL Display & system controller section



TO CN851 OF EMW10729 (CD CHANGER) TO SHEET 6/10

* MARK	MX-J570V UB-US-UX	MX-J570V UT	MX-J680V US	MX-J680V UF-UT	CA-MXJ770V UB-US-UX	CA-MXJ880V US	CA-MXJ880V UF-UT	CA-MXJ970V UB-US-UX	CA-MXJ980V US	CA-MXJ980V UF-UT
R825-R26	NONE	NONE	NONE	NONE	NONE	NONE	NONE	1K	1K	1K
R824	330K	330K	330K	330K	75K	75K	75K	18K	18K	18K
R951	18K	18K	18K	18K	18K	18K	18K	18K	18K	18K
R893	75K (UX*18K)	75K	75K	75K	75K (UX*18K)	75K	75K	75K (UX*18K)	75K	75K
R894	330K (UX*18K)	330K	330K	330K	330K (UX*18K)	330K	330K	330K (UX*18K)	330K	330K
D950-D992 D951-D991	NONE	NONE	NONE	NONE	NONE	NONE	NONE	SLA-570JT3F	SLA-570JT3F	SLA-570JT3F
D952-D994 D953-D993	NONE	NONE	NONE	NONE	NONE	NONE	NONE	SLA-570JT3F	SLA-570JT3F	SLA-570JT3F
R950-R957 R998-R999	NONE	NONE	NONE	NONE	NONE	NONE	NONE	75	75	75
Q950-Q991	NONE	NONE	NONE	NONE	NONE	NONE	NONE	KRC-102M-T	KRC-102M-T	KRC-102M-T
X801	QAX0416-001Z	QAX0416-001Z	QAX0416-001Z	QAX0416-001Z	QAX0416-001Z	QAX0416-001Z	QAX0416-001Z	QAX0283-001Z	QAX0283-001Z	QAX0283-001Z
L1001-L1002	SHORT	GQL231K-470Y	SHORT	GQL231K-470Y	SHORT	SHORT	SHORT	GQL231K-470Y	SHORT	GQL231K-470Y
C1001-C1002	NONE	0.001u	NONE	0.001u	NONE	NONE	NONE	0.001u	NONE	0.001u
L1003	GQL231K-2R2Y	QGR0779-001Z	GQL231K-2R2Y	QGR0779-001Z	GQL231K-2R2Y	GQL231K-2R2Y	GAX0416-001Z	GQL231K-2R2Y	QGR0779-001Z	QGR0779-001Z
R853	2.2 F.RES (1/4W)	2.2 F.RES (1/4W)	2.2 F.RES (1/4W)	2.2 F.RES (1/4W)	2.2 F.RES (1/4W)	2.2 F.RES (1/4W)	2.2 F.RES (1/4W)	ICP-N15-T	ICP-N15-T	ICP-N15-T

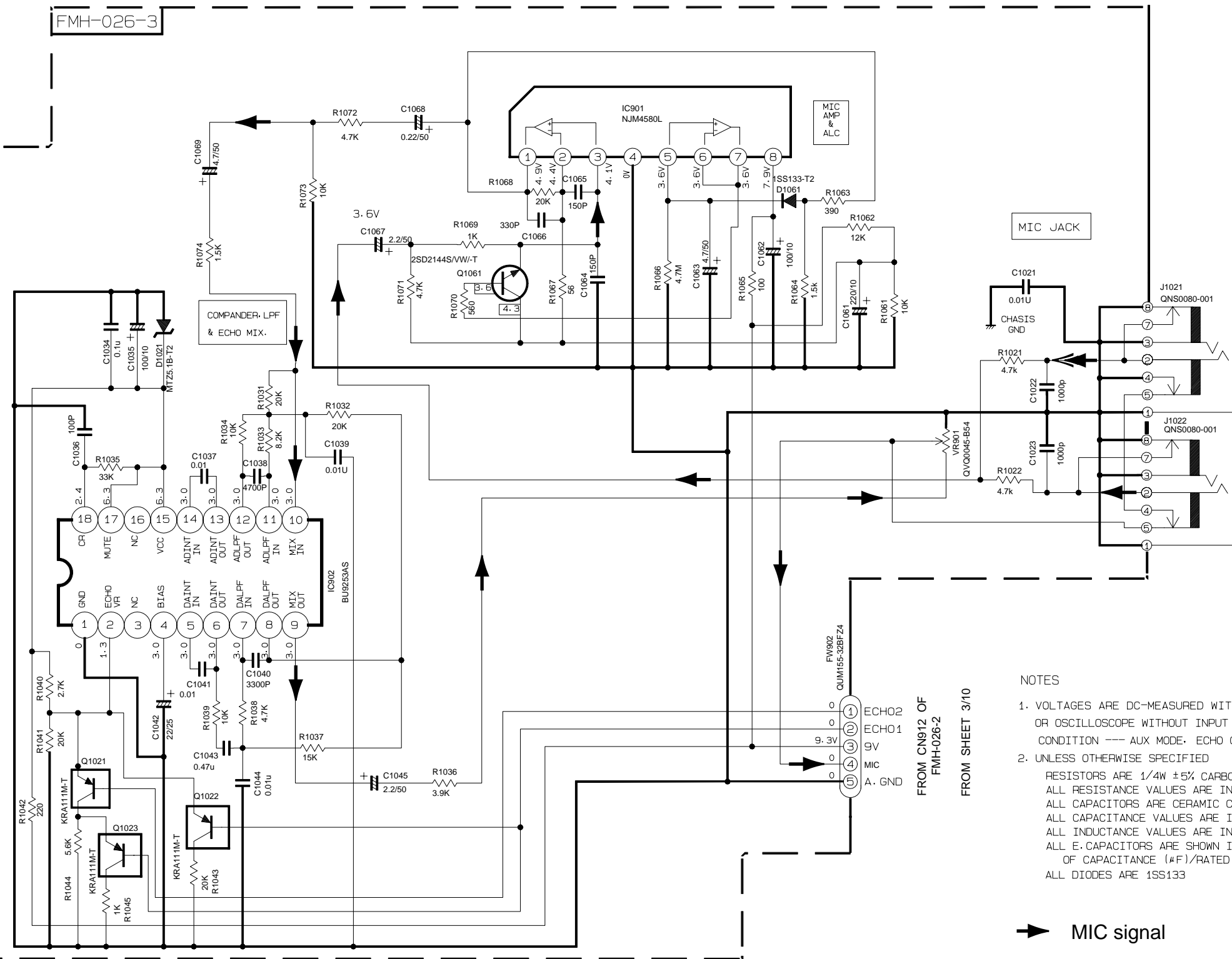
TO CN306 OF VMW1432 TO SHEET 7/10 FROM FW704 OF FMH-026-1 FROM FW952 OF FMB-022-04

NOTES

- VOLTAGES ARE DC-MEASURED WITH A DIGITAL VOLT METER OR OSCILLOSCOPE WITHOUT INPUT SIGNAL. CONDITION — AUX MODE, VOL. MDX, BASS OFF.
- UNLESS OTHERWISE SPECIFIED: RESISTORS ARE 1/4W, 5% TOLERANCE RESISTOR. ALL RESISTANCE VALUES ARE IN OHMS. ALL CAPACITORS ARE CERAMIC CAPACITOR OR MYLAR CAPACITOR. ALL CAPACITANCE VALUES ARE IN PICO(F). ALL INDUCTANCE VALUES ARE IN HENRY(H). ALL CAPACITORS ARE SHOWN IN THE FORM OF CAPACITANCE (F)/VOLTAGE (V). ALL DIODES ARE 1N5113.

⇨ TUNER signal
⇨ CD signal

Microphone amplifier section



- NOTES
- VOLTAGES ARE DC-MEASURED WITH A DIGITAL VOLT METER OR OSCILLOSCOPE WITHOUT INPUT SIGNAL. CONDITION --- AUX MODE. ECHO OFF
 - UNLESS OTHERWISE SPECIFIED
RESISTORS ARE 1/4W ±5% CARBON RESISTOR.
ALL RESISTANCE VALUES ARE IN OHM(Ω).
ALL CAPACITORS ARE CERAMIC CAPACITOR OR MYLAR CAPACITOR.
ALL CAPACITANCE VALUES ARE IN #F(P=pF).
ALL INDUCTANCE VALUES ARE IN #H(m=mH).
ALL E. CAPACITORS ARE SHOWN IN THE FORM OF CAPACITANCE (#F)/RATED VOLTAGE (V).
ALL DIODES ARE 1SS133

➔ MIC signal

FROM CN912 OF FMH-026-2

FROM SHEET 3/10

5
4
3
2
1

CD Servo & CD Mechanism control section

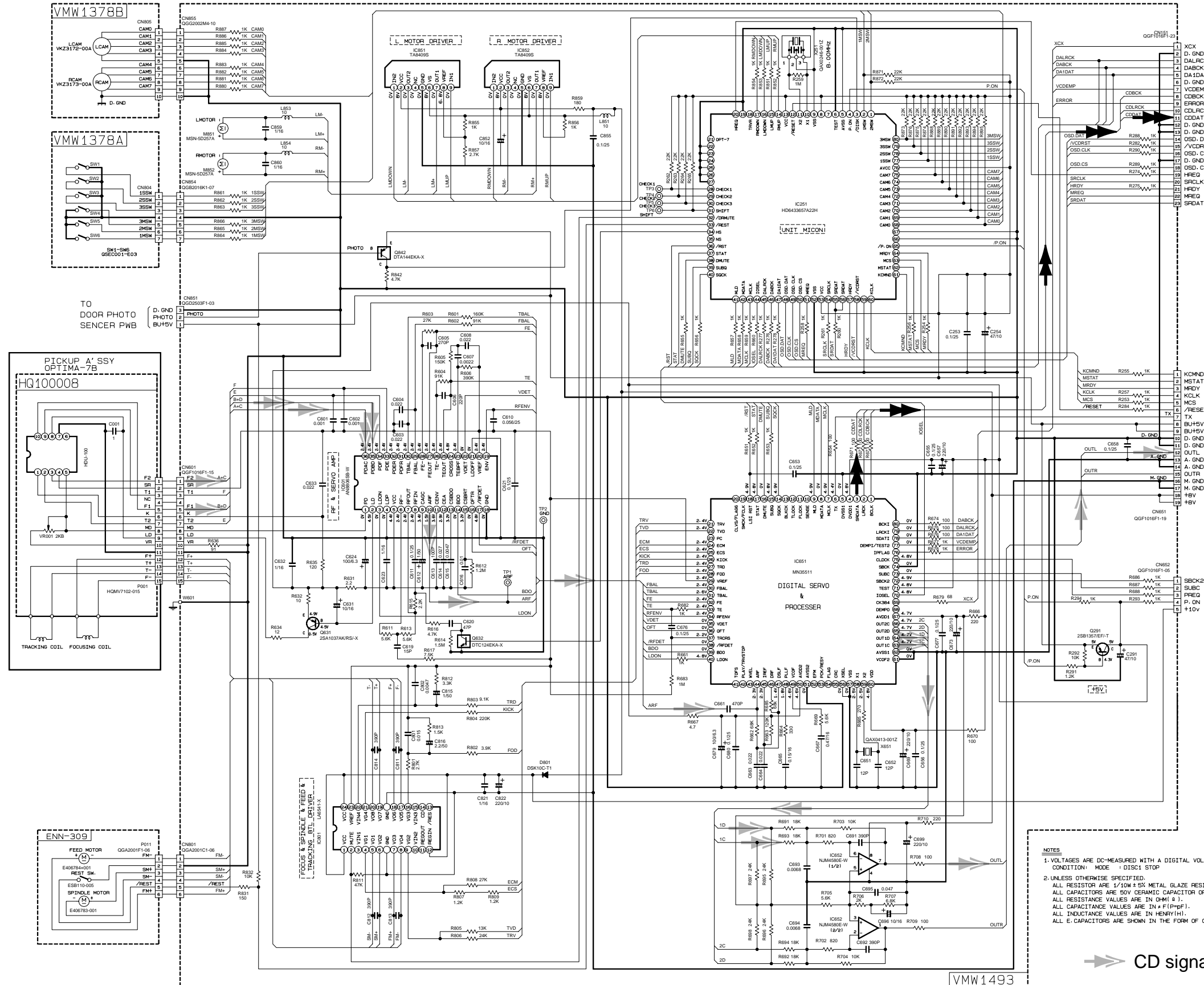
5

4

3

2

1



TO CN102 OF
VMW1496
SHEET 10/10

TO CN868
OF FMB-022-06
SHEET 4/10

TO CN101 OF
FMP-004-1
SHEET 9/10

- NOTES
1. VOLTAGES ARE DC-MEASURED WITH A DIGITAL VOLT METER
CONDITION: MODE 1 DISC1 STOP
 2. UNLESS OTHERWISE SPECIFIED.
ALL RESISTORS ARE 1/10W ± 5% METAL GLAZE RESISTOR.
ALL CAPACITORS ARE 50V CERAMIC CAPACITOR OR 50V MYLAR CAPACITOR.
ALL RESISTANCE VALUES ARE IN OHM (Ω).
ALL CAPACITANCE VALUES ARE IN PICO (pF).
ALL INDUCTANCE VALUES ARE IN HENRY (H).
ALL E-CAPACITORS ARE SHOWN IN THE FORM OF CAPACITANCE (C) / RATED VOLTAGE (V).

➡ CD signal
➡➡ VIDEO signal

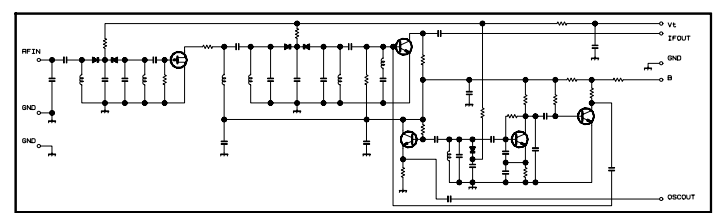
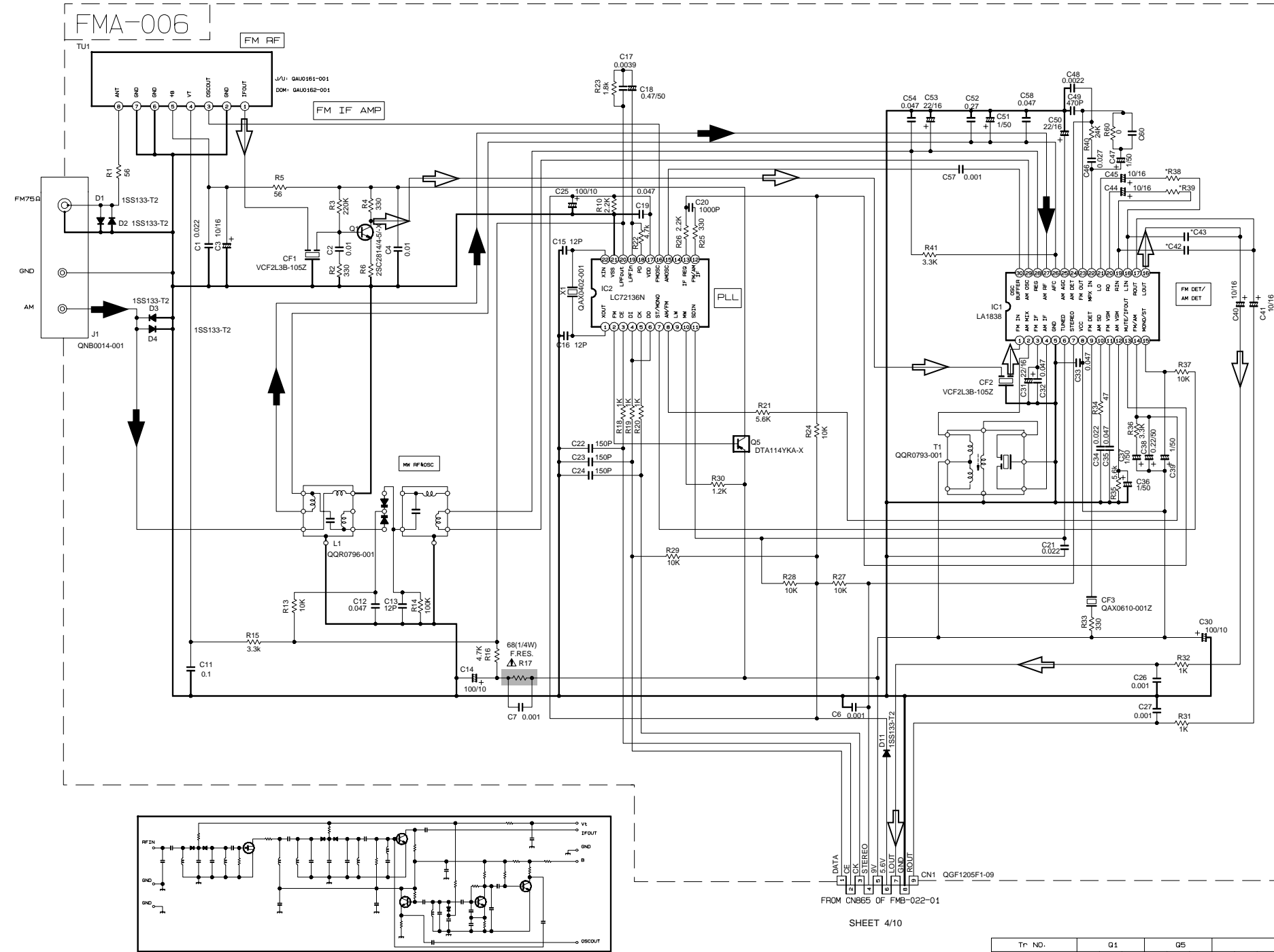
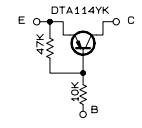
Tuner section

⚠ Parts are safety assurance parts.
When replacing those parts make sure to use the specified.

NOTES

- VOLTAGES ARE DC-MEASURED WITH A DIGITAL VOLT METER.
- ALL RESISTORS ARE 1/8W ±5% METAL GLAZE RESISTOR.
- ALL RESISTANCE VALUES ARE IN OHM(Ω).
- ALL CAPACITANCE VALUES ARE IN P(F=PF).
- ALL E. CAPACITORS ARE SHOWN IN THE FORM OF CAPACITANCE (μF)/RATED VOLTAGE (V).
- SI DIODES (▶) ARE ALL 1SS133-T THAT CAN BE CHANGED TO SIMILAR DIODE SUCH AS MA165 OR HSS104J.
- PARTS NO. OF TRANSISTORS ARE AS FOLLOWS.
Q1 2SC2814/4-5/-X Q2, Q3 2SC2412K/R/-X
Q4-Q5 DTA114YKA-X

B. INSIDE OF DIGITAL TRANSISTORS ARE SHOWN AS FOLLOWS:



CONDITION	PIN NO.	1	2	3	4	5	6	7	8	9	10	11	12	13	14	15	16	17	18	19	20	21	22	23	24	25	26	27	28	29	30
IC1 FM NO SIGNAL		3.6	8.9	3.6	3.6	0	5.0	5.0	8.9	8.9	1.3	0.1	0	0.9	7.8	7.8	4.3	4.3	4.3	4.3	3.4	3.4	2.8	3.4	0	0	3.5	3.5	3.6	3.6	2.7
IC1 FM 60dB STEREO		3.6	8.9	3.6	3.6	0	5.0	5.0	8.9	8.9	1.3	4.3	0	0.9	7.8	7.8	4.3	4.3	4.3	4.3	3.4	3.4	2.8	3.4	0	0	3.6	3.6	3.6	3.6	2.7
IC1 AM NO SIGNAL		3.5	9.0	3.5	3.5	0	5.0	5.1	9.0	2.6	1.3	0	0	0.9	4.7	5.5	4.3	4.3	4.3	3.3	3.2	2.8	UST	0.7	0.7	3.6	3.6	3.6	3.6	2.1	
IC2 FM NO SIGNAL		2.5	0	0	5.0	4.9	5.0	7.9	7.8	3.6	6.1	5.1	0	0	0	2.5	5.1	0.9	0.9	3.8	0	2.3									

Tr. NO.	Q1	Q5	
PIN NO.	E C B E C B	E C B E C B	
FM 87.5MHz NO SIGNAL	0 7.1 0.85 8.9 8.8 0		
AM 522kHz NO SIGNAL	0 0 0 9.0 0 8.9		
Tr. NO.	Q2	Q3	Q4
PIN NO.	E C B E C B E C B	E C B E C B	E C B
AM 522kHz NO SIGNAL	0 0 0.7 0 0 0.7 0 0 0.7 0 3.6 3.6		
AM 144kHz NO SIGNAL	0 0 0.3 0 0.3 0.3 3.6 3.6 3.6		

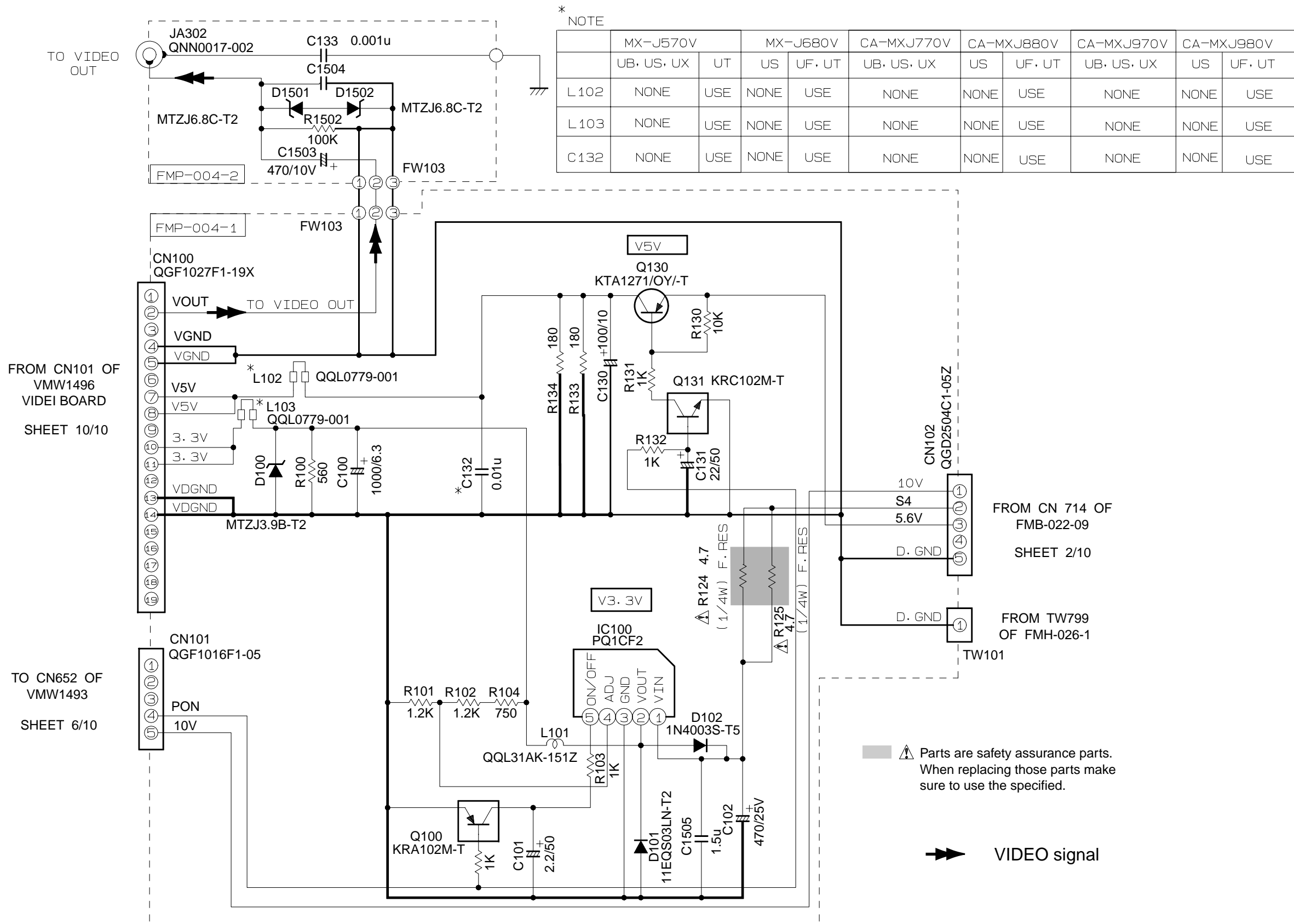
PART NO.	VERSION		
	J/C	User's use	FORM IN MODEL ONLY
R38	563	563	563
R39	563	563	563
C42	0.0022	0.0015	0.0015
C43	0.0022	0.0015	0.0015
R4	331	331	221
R5	560	560	270
R6	240	240	270

⇨ FM / TUNER signal
⇨ AM signal

5
4
3
2
1

Video CD regulator section

5
4
3
2
1



* NOTE

	MX-J570V		MX-J680V		CA-MXJ770V		CA-MXJ880V		CA-MXJ970V		CA-MXJ980V	
	UB, US, UX	UT	US	UF, UT	UB, US, UX	US	UF, UT	UB, US, UX	US	UF, UT	UB, US, UX	US
L102	NONE	USE	NONE	USE	NONE	NONE	USE	NONE	NONE	USE	NONE	USE
L103	NONE	USE	NONE	USE	NONE	NONE	USE	NONE	NONE	USE	NONE	USE
C132	NONE	USE	NONE	USE	NONE	NONE	USE	NONE	NONE	USE	NONE	USE

FROM CN101 OF
VMW1496
VIDEI BOARD
SHEET 10/10

TO CN652 OF
VMW1493
SHEET 6/10

FROM CN 714 OF
FMB-022-09
SHEET 2/10

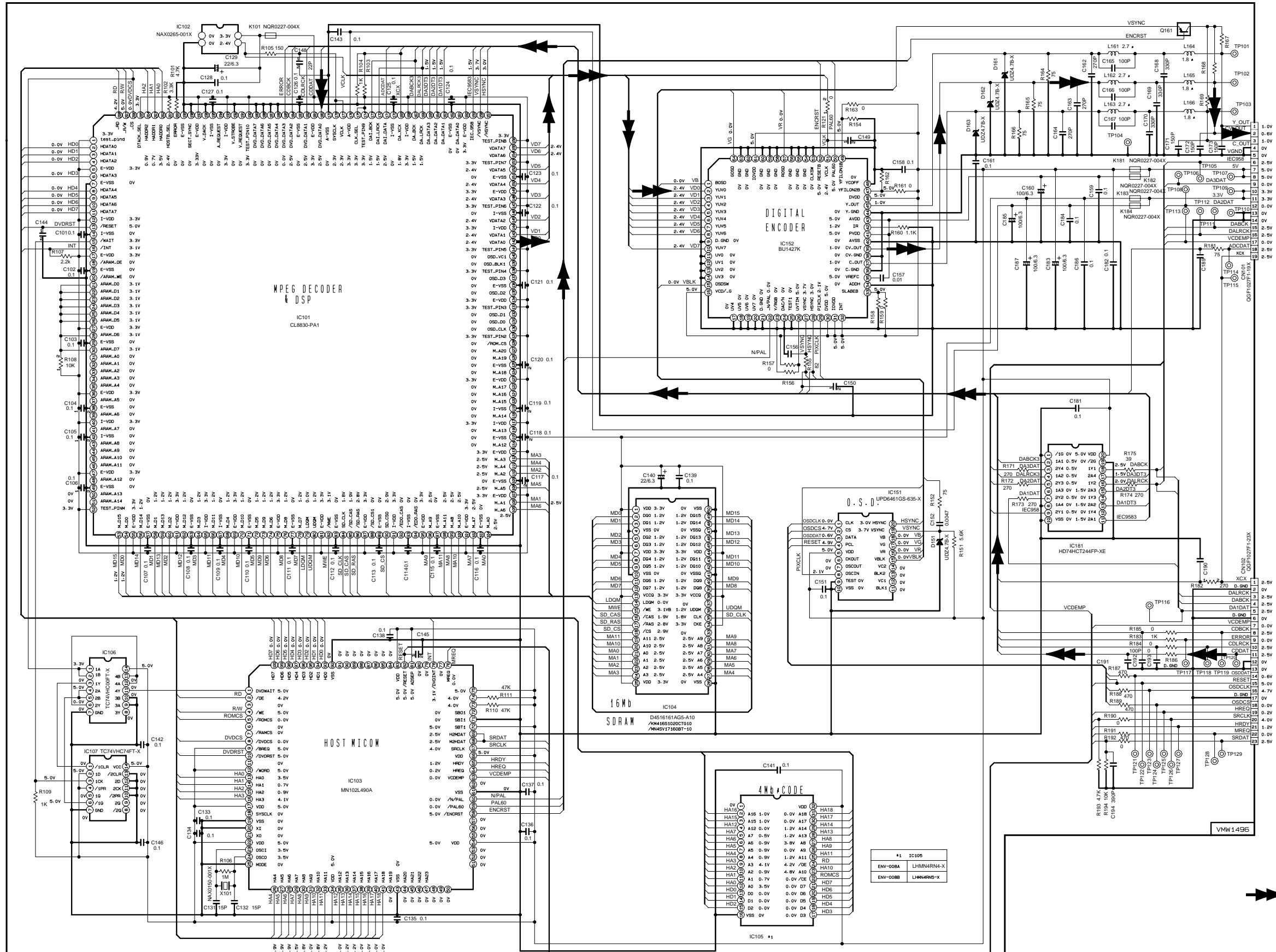
FROM TW799
OF FMH-026-1

Parts are safety assurance parts.
When replacing those parts make
sure to use the specified.

VIDEO signal

Super VCD control section

5
4
3
2
1



▶ VIDEO signal

TO CN100 OF FMP-004-1 SHEET 9/10

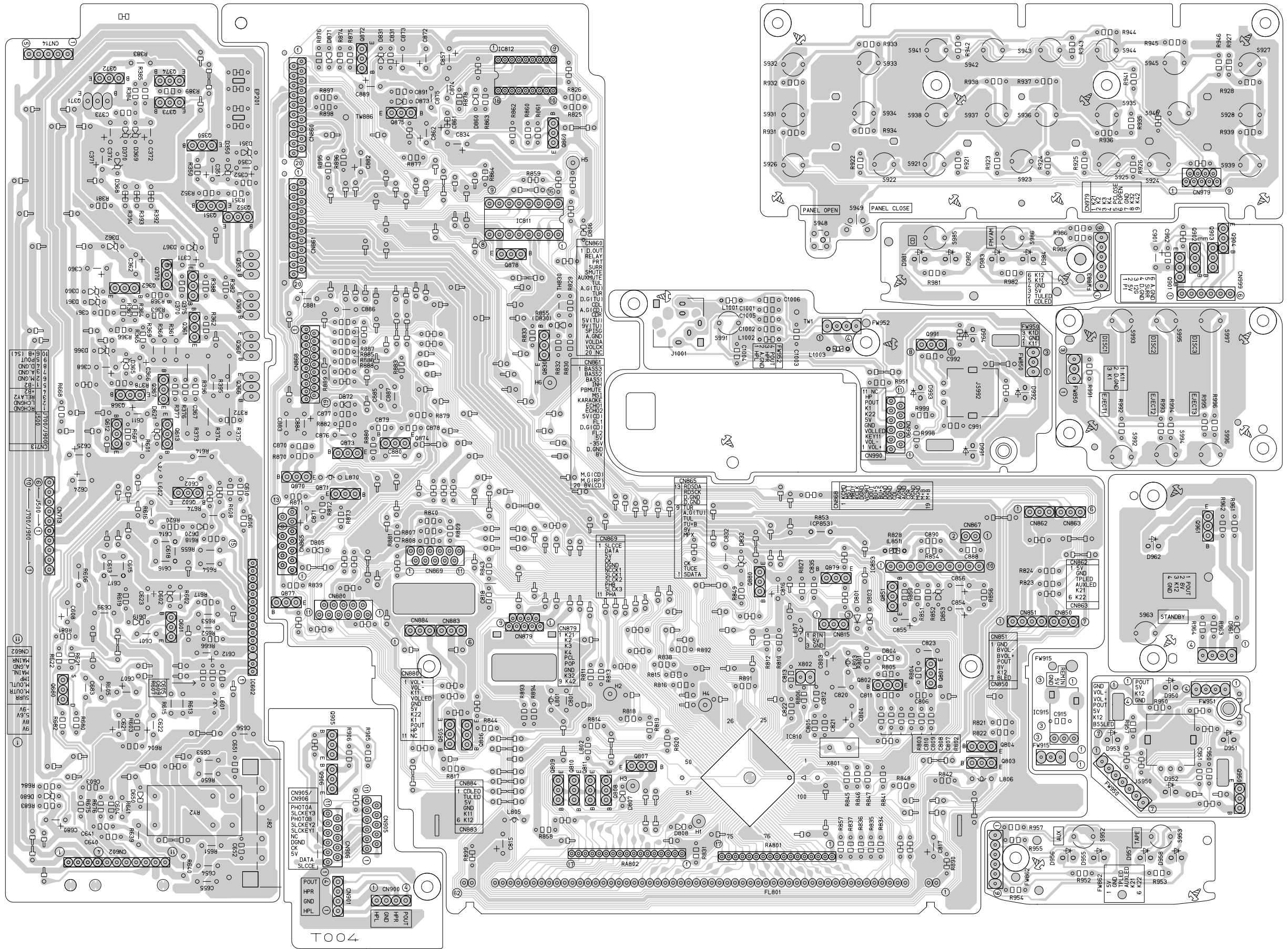
FROM CN151 OF VMW 1493 SHEET 6/10

Printed circuit boards

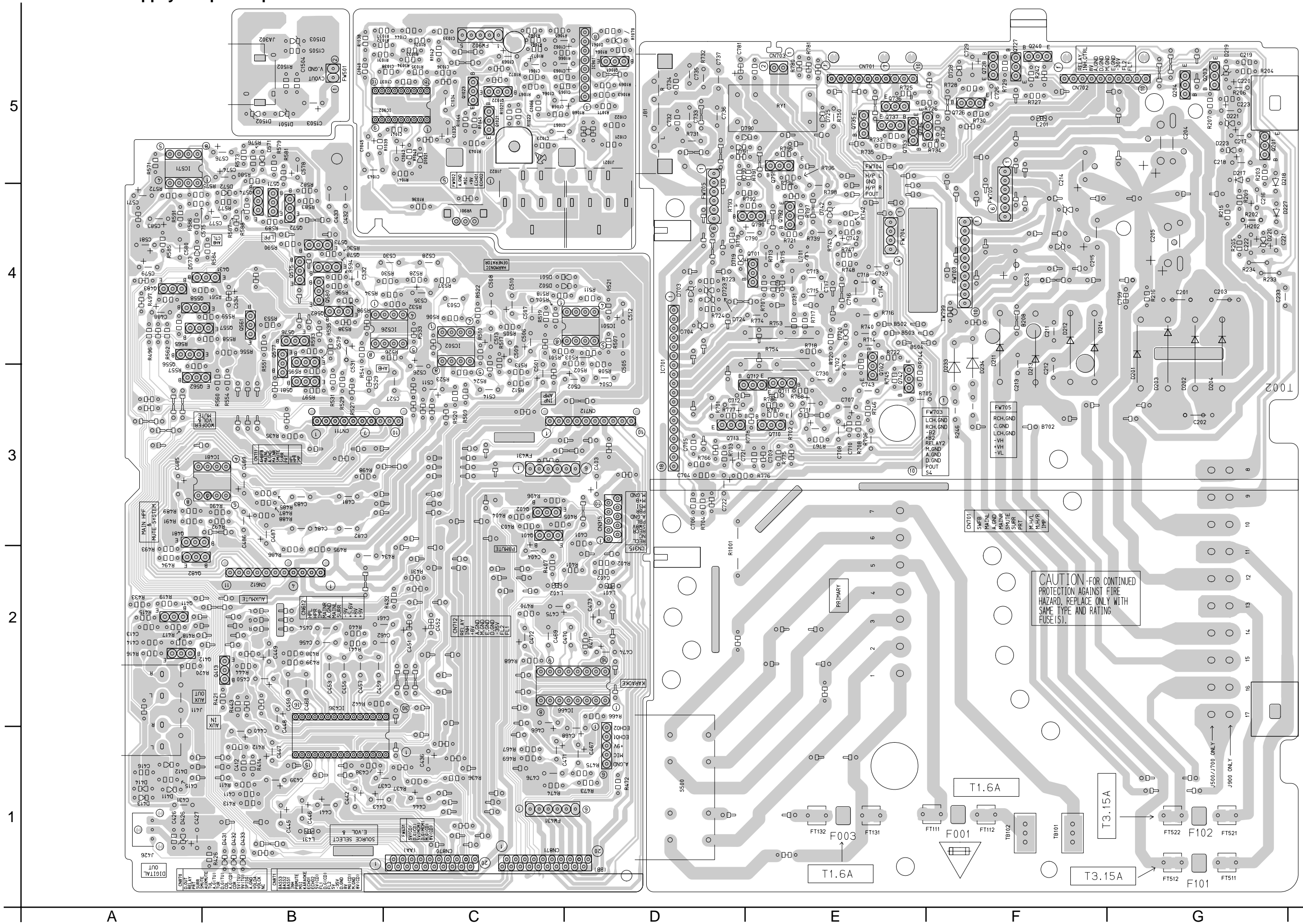
■ Main & pre-amplifier board

5
4
3
2
1

A B C 2-12 D E F G H

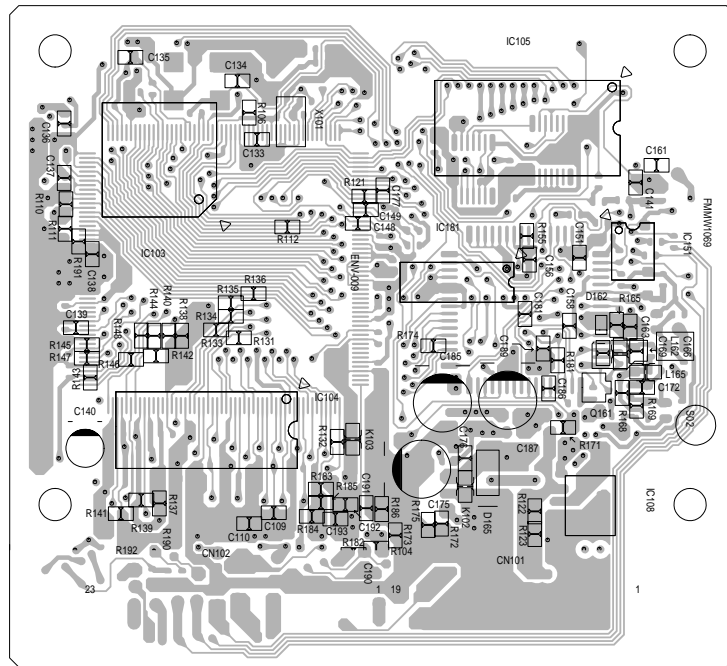


Power supply & input/output board

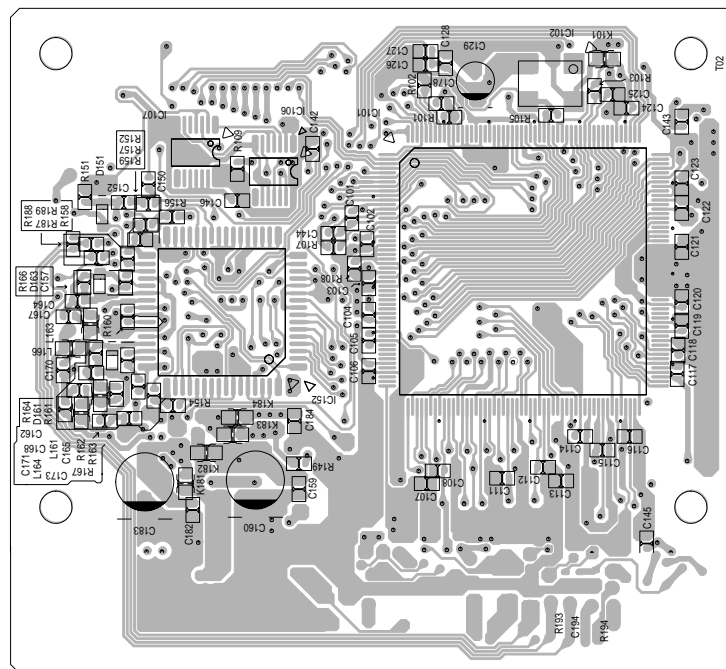


■ Video CD board

(Forward side)



(Reverse side)



5

4

3

2

1

A

B

C

■ VCD board

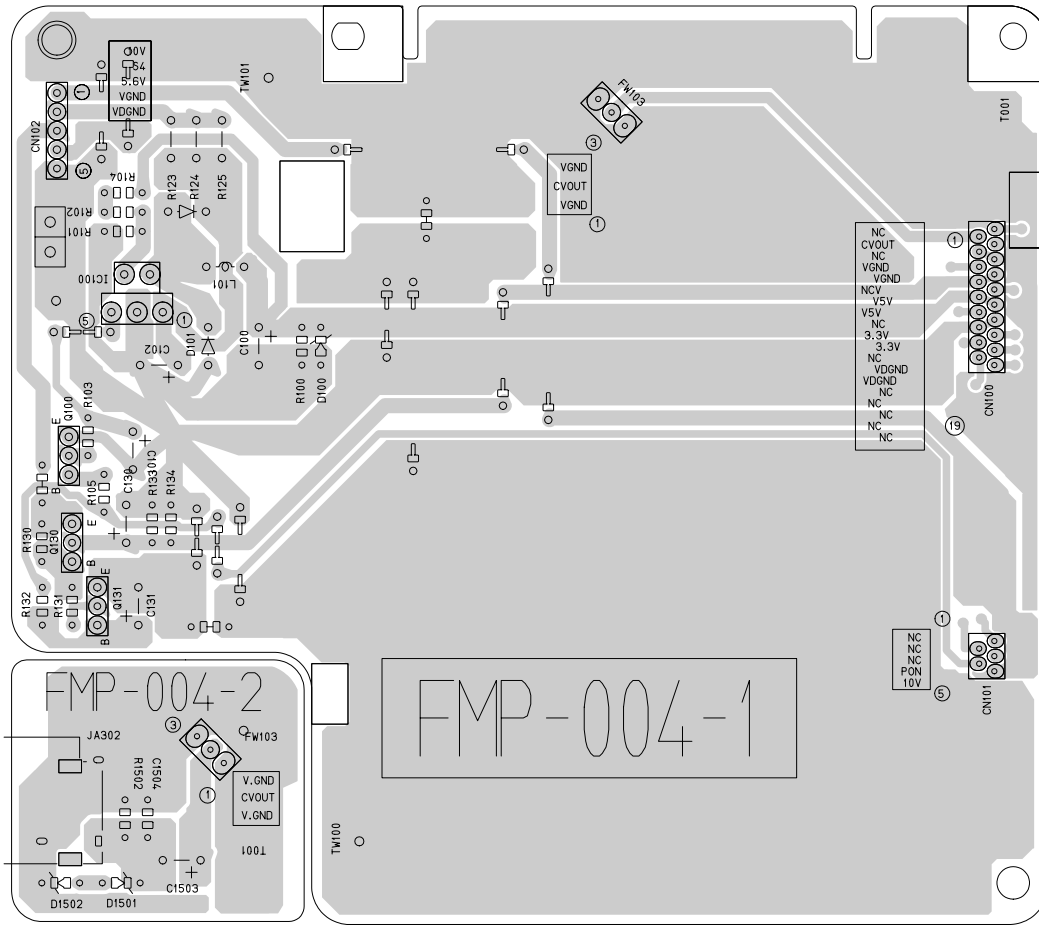
5

4

3

2

1



■ Head amplifier board

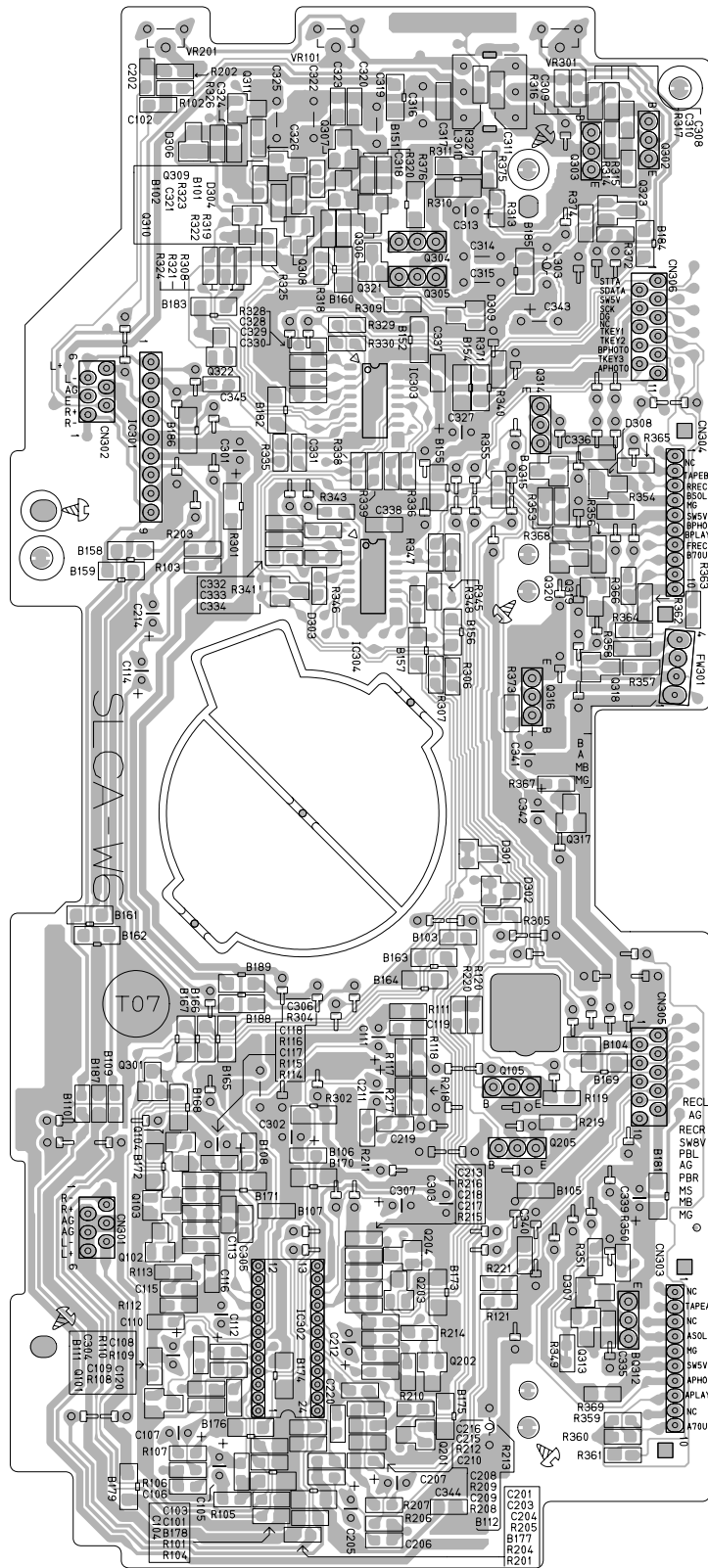
5

4

3

2

1



A

B

C

■ Tuner board

